

Index

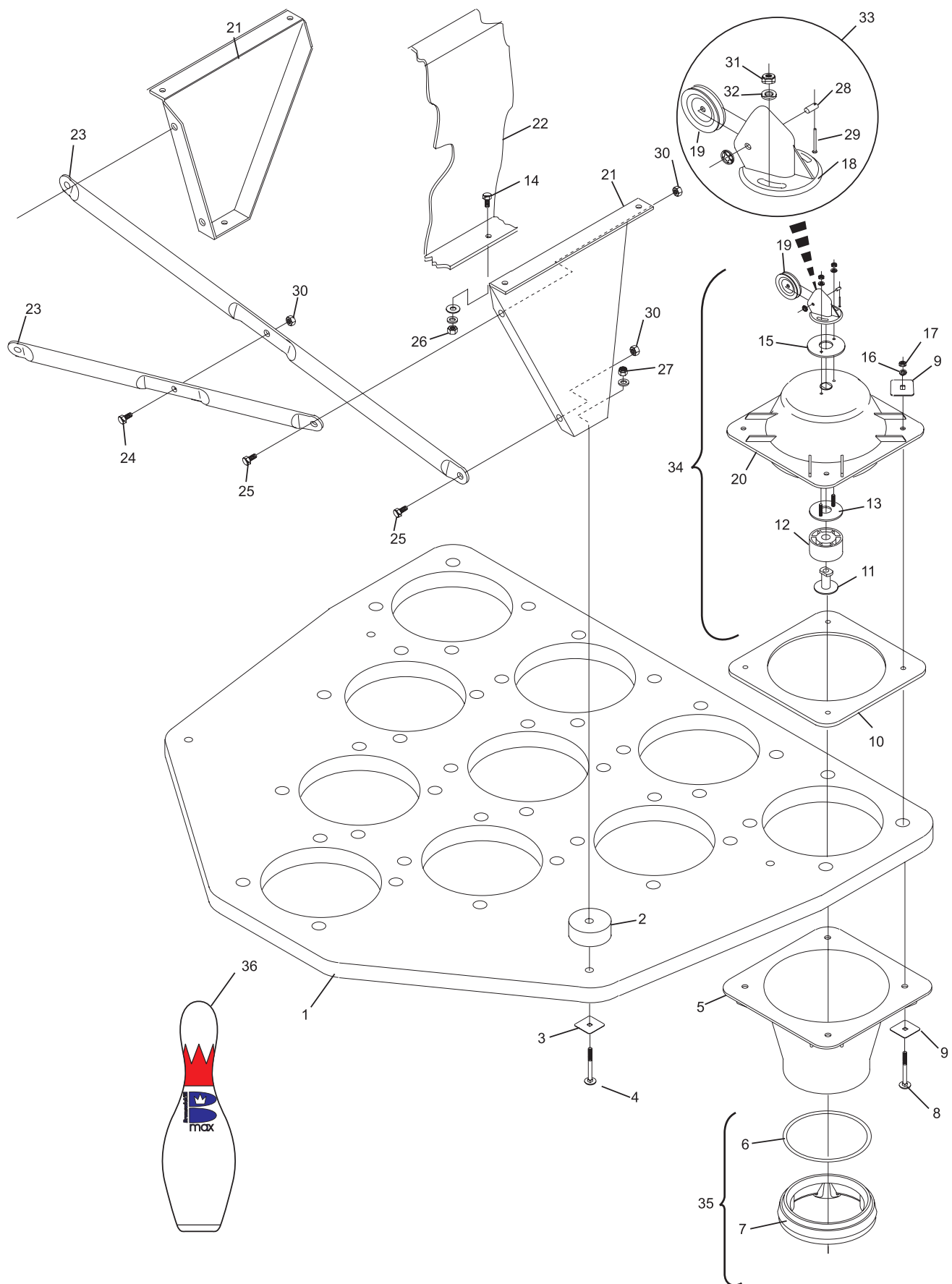
No.	Part No.	Description
1.	55-082630-001	Setting Platform
2.	55-080383-004	Vibration Mount
3.	55-082531-004	Square Washer
4.	11-052618-001	Carriage Bolt (10 mm x 50 mm)
5.	55-082134-001	Lower Centering Guide Housing
6.	*55-082136-004	Centering Guide Ring
7.	*55-082135-003	Centering Guide
8.	11-052617-001	Screw (8 mm x 70 mm)
9.	55-082608-004	Square Washer
10.	55-080347-002	Centering Guide Mount Plate
11.	**55-082609-004	Pin Head Stop Support
12.	**55-082606-004	Pin Head Stop
13.	**55-082280-004	Pin Head Mounting Plate
14.	11-051005-001	Bolt (10 mm x 20 mm)
15.	**55-082281-004	Pin Head Nut Plate
16.	**11-051170-001	Washer (8 mm)
17.	11-051704-001	Nut (8 mm)
18.	**55-082279-003	String Pulley Housing
19.	55-030408-004	String Idler Pulley
20.	**55-082081-001	Upper Centering Guide Housing
21.	55-081000-002	Platform Support Brace
22.	55-081031-001	Right Side Frame
23.	55-080239-003	Cross Support Brace
24.	11-051010-001	Screw (8 mm x 20)
25.	11-051038-001	Screw (8 mm x 16)
26.	11-051745-001	Locknut (10 mm)
27.	11-051703-001	Nut (10 mm)
28.	***55-082031-004	Idler Pulley Shaft
29.	***55-080713-004	Screw (2 mm x 40 mm)
30.	11-051744-001	Self Locking Nut (8 mm)
31.	11-051743-001	Self Locking Nut (6 mm)
32.	11-052008-001	Flat Washer (6 mm), (Qty. 20)
33.	55-082270-009	String Pulley Housing Assembly Complete (includes index nos. 18, 28, 29, 31, and 32)
34.	55-082085-009	Upper Centering Guide Housing for pins #2 - #10 (includes index nos. 9, 11, 12, 13, 15, 16, 17, 19, and 20)
	55-082088-009	Upper Centering Guide Housing for pin #1 (includes index nos. 9, 11, 12, 13, 15, 16, 17, 19, and 20)
35.	55-082138-009	Centering Guide Ring Assembly (includes index nos. 6 and 7)
36.	63-861169-000	Max Crown GID, Single Pin - Drilled
	63-861169-167	Max Crown GID, Set - Drilled
	63-861170-000	Max Red Crown, Single Pin - Drilled
	63-861170-167	Max Red Crown, Set - Drilled

* Not sold separately - order index number 35.

** Not sold separately - order index number 34.

*** Not sold separately - order index number 33.

Setting Platform Assembly



Setting Platform Assembly