

Section D

ACCELERATOR

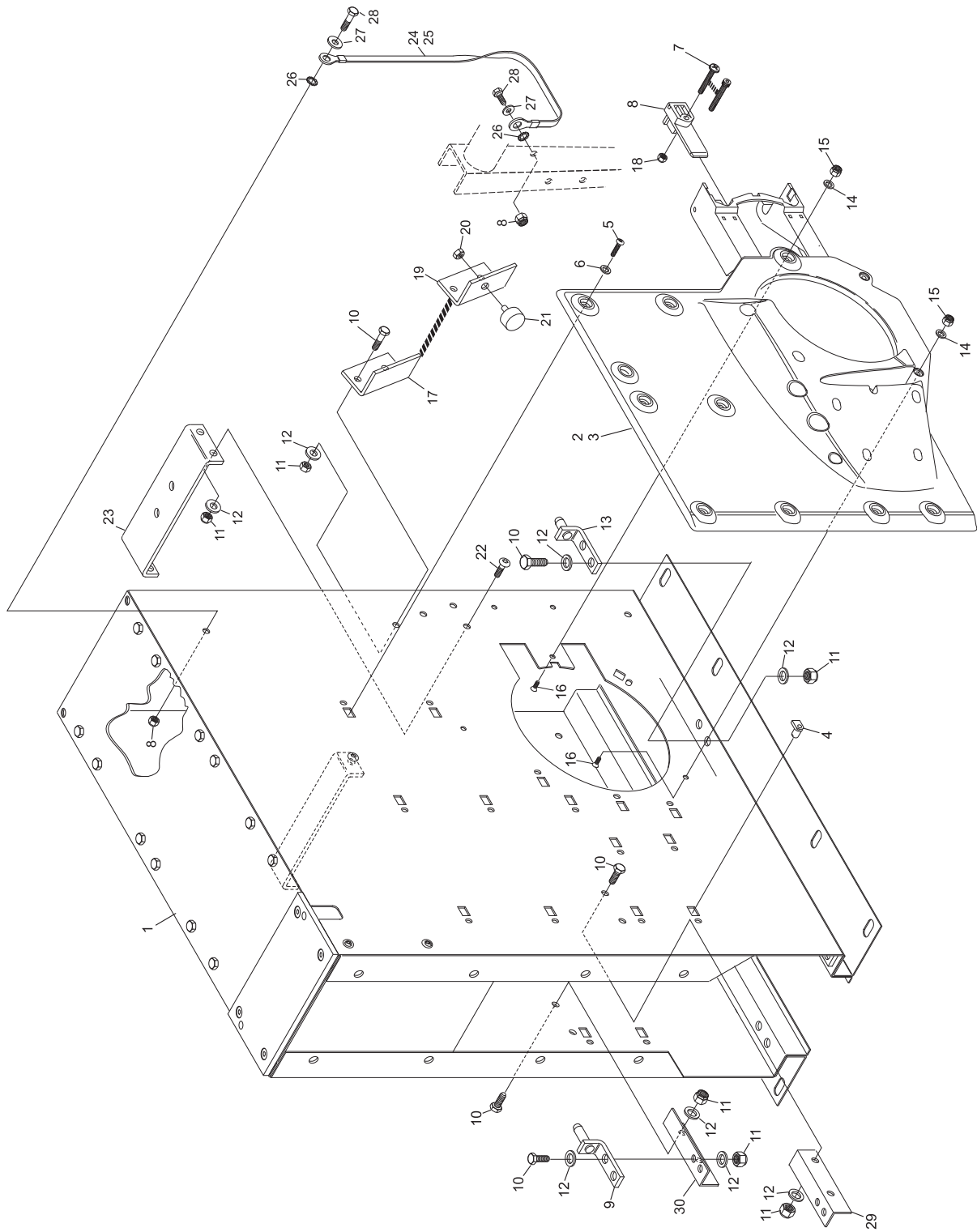
Index

No.	Part No.		Description
1.	47-035305-009	S.O.	Ball Accelerator Box (complete)
2.	47-035240-001		L.H. Ball Door Protector Plate - 10 pin side
3.	47-035241-001		R.H. Ball Door Protector Plate - 7 pin side (shown)
4.	11-055800-000		EJOT Plastic Fastener (Nut Plate)
5.	11-054466-000		EJOT Plastic Fastener Screw (25 mm x 60 mm)
6.	11-052008-001		Flat Washer (6.4 mm)
7.	11-054460-000	N.A.	EJOT Screw (60 mm x 50 mm)
	11-054466-000	R.O.	Torx Head Self Tap Screw (60 mm x 25 mm)
8.	47-035239-004		Axle Wedge
9.	47-035220-003		Front Accelerator Mount Bracket w/Pin
10.	11-051019-001		Hex Hd. Cap Screw (10 mm x 25 mm)
11.	11-051745-001		Locknut (10 mm)
12.	11-052018-001		Flat Washer (10.5 mm)
13.	47-035219-003		Rear Ball Rod Assembly Mount w/Pin
14.	11-052020-001		Flat Washer (5.3 mm)
15.	11-051742-001		Locknut (5 mm)
16.	11-052933-001		Countersunk Screw (5 mm x 12 mm)
17.	47-021249-004		Ball Cushion Stop
18.	11-051743-001		Locknut (6 mm)
19.	47-025751-004		Stop Bracket
20.	11-051744-001		Hex Nut (8 mm)
21.	99-020434-004		Rubber Bumper (30 x 20)
22.	11-054805-001		Button Hd. Socket Screw (10 mm x 25 mm)
23.	47-035228-003		Mount Bracket
24.	47-245788-003		Ground Strap - only
25.	47245788-009		Ground Strap Kit includes mounting hardware
26.	11-055015-001		Starlock Washer (8 mm)
27.	11-052003-001		Flat Washer (8 mm)
28.	11-051010-001		Hex Head Cap Screw (8 mm x 20 mm)
29.	47-035224-003	N.A.	Front Support Left Hand
30.	47-035223-003	N.A.	Front Support Right Hand

N.A. = No Longer Available

S.O. = Special Order

GS-X/CPO Accelerator Box Assembly



GS-X/CPO Accelerator Box Assembly