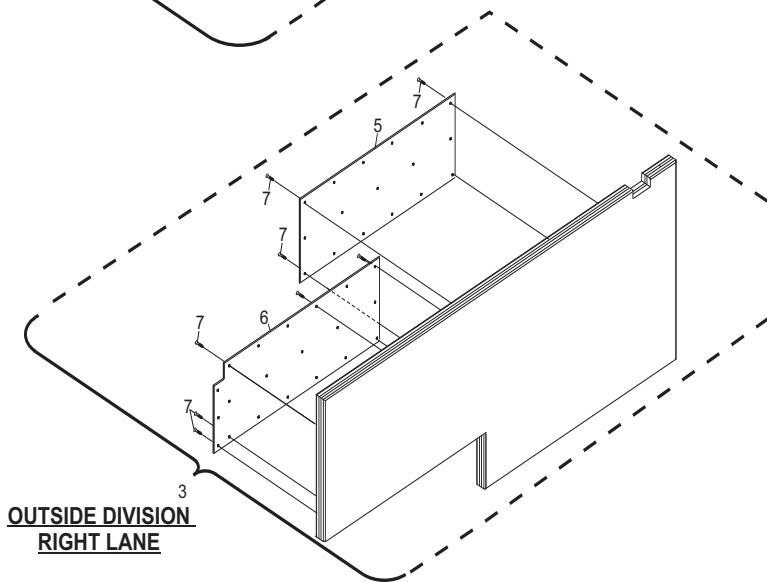
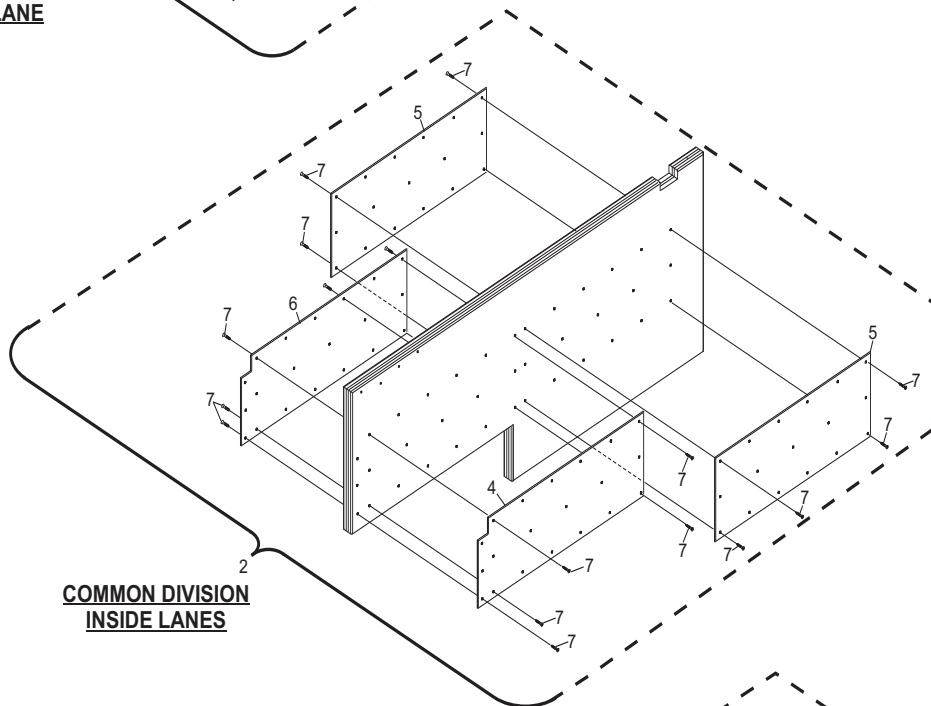
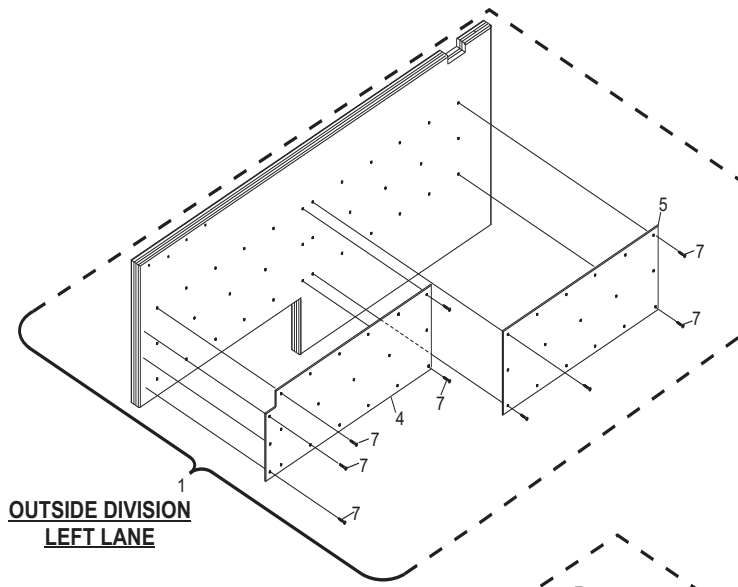


Section C

**Pit / Ball Accelerator /
Ball Elevator**

Index No.	Part No.	Package / Order Reference	Description
1.	55-278143-009		Division Kickback Complete - Outside Left Lane
2.	55-278142-009		Division Kickback - Inside (Common)
3.	55-278144-009		Division Kickback - Outside Right Lane
4.	55-278254-000		Protector Plate (Right Hand - Long)
5.	55-278150-002		Protector Plate (Long)
6.	55-278253-000		Protector Plate (Left Hand - Long)
7.	11-051892-000		Torx - Counter Sink Wood Screw (M4.5 x 25 mm)

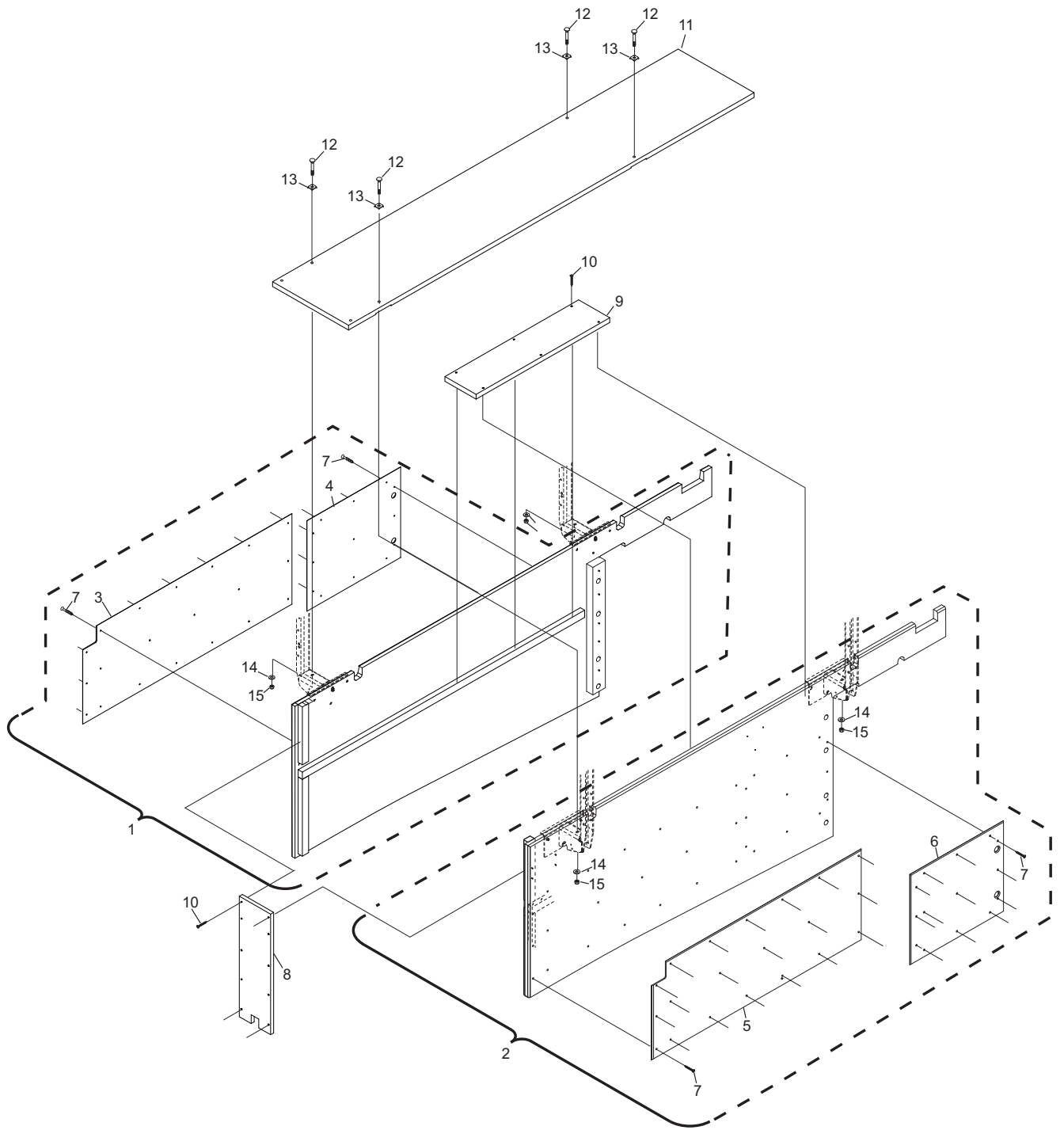
Division Kick Backs



Division Kick Backs

Index No.	Part No.	Package / Order Reference	Description
1.	55-278145-009		Ball Return Kickback - Left (Complete)
2.	55-278146-009		Ball Return Kickback - Right (Complete)
3.	55-278253-000		Protector Plate (Left Hand - Long)
4.	55-278151-002		Protector Plate (Left Hand - Short)
5.	55-278254-000		Protector Plate (Right Hand - Long)
6.	55-278217-002		Protector Plate (Right Hand - Short)
7.	11-051892-000		Torx - Counter Sink Wood Screw (M4.5 x 25 mm)
8.	55-278147-000		Cover - Front (685 mm x 206 mm x 20 mm)
9.	55-273204-003		Cover - Accelerator (880 mm x 205 mm x 27 mm)
10.	11-051893-000		Torx T-25 Sink Wood Screw (M5 x 60 mm)
11.	55-278053-001		Walkway Top Cover
12.	11-052603-001		Carriage Bolt (M8 x 45 mm)
13.	55-278137-004		Square Washer (M8)
14.	11-052019-001		Flat Washer (8.4 mm x 24 mm x 2 mm)
15.	11-051744-001		Hex Lock Nut (M8)

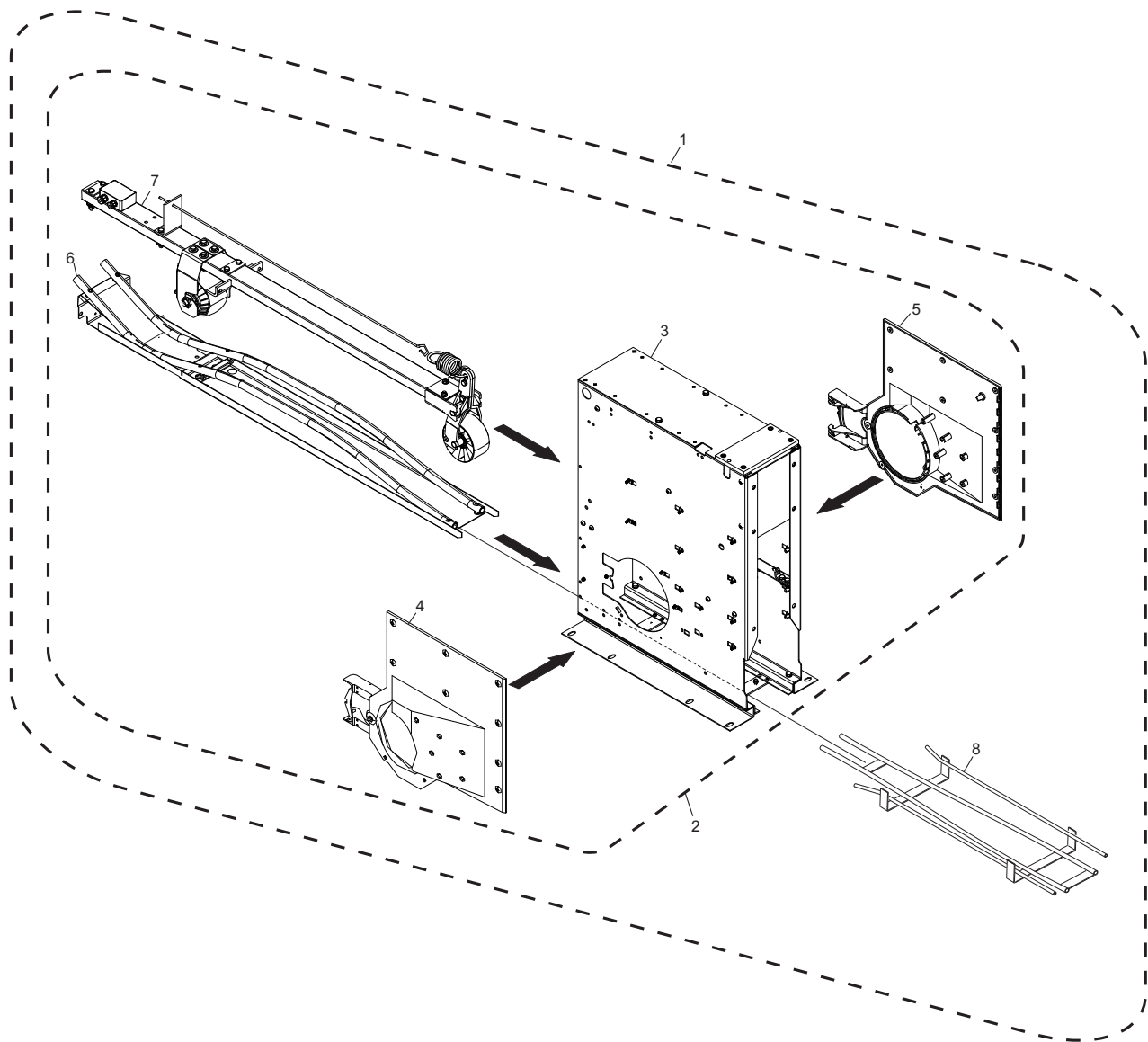
Ball Return Kick Backs



Ball Return Kick Backs

Index No.	Part No.	Package / Order Reference	Description
1.	55-278221-220		Stringpin Ball Accelerator 220V Assembly (With Transition Track and Hardware)
	55-278221-380		Stringpin Ball Accelerator 380V Assembly (With Transition Track and Hardware)
2.	55-108222-220		Ball Accelerator Assembly 220V (Without Transition Track and Hardware)
	55-108222-380		Ball Accelerator Assembly 380V (Without Transition Track and Hardware)
3.	55-108223-009		Accelerator Box Assembly
4.	47-035240-001		L.H. Ball Door Protector Side Plate - 10 pin side
5.	47-035241-001		R.H. Ball Door Protector Side Plate - 7 pin side
6.	47-035304-001		Ball Guide Assembly
7.	55-108224-009	S.O.	Drive Assembly (Stringpin)
8.	53-520634-001		Transition Track (Metric)

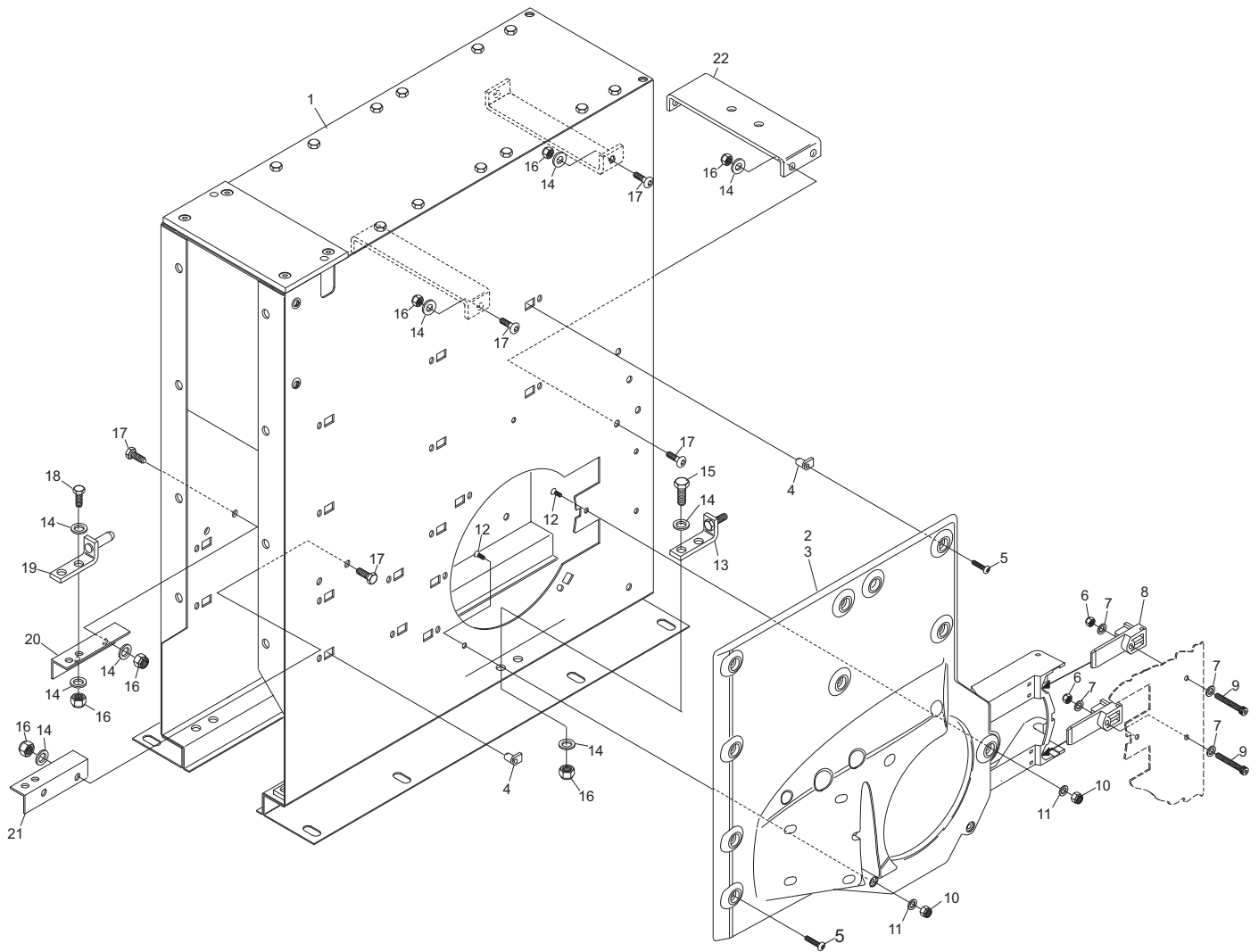
Ball Accelerator Assembly (Subway)



Ball Accelerator Assembly (Subway)

Index No.	Part No.	Package / Order Reference	Description
1.	55-108223-009		Accelerator Box Assembly
2.	47-035240-001		L.H. Ball Door Protector Plate - 10 pin side
3.	47-035241-001		R.H. Ball Door Protector Plate - 7 pin side (shown)
4.	11-055800-000		EJOT Plastic Fastener (Nut Plate)
5.	11-054466-000		Torx Head Seft Tap Plastic Screw (K60 x 25 mm)
6.	11-051743-001		Locknut (M6)
7.	11-052008-001		Flat Washer (6.4 mm x 12 mm x 1.6 mm)
8.	47-035239-004		Holder Wedge
9.	11-051562-001		Socket Head. Cap Screw (M6 x 60 mm)
10.	11-051742-001		Locknut (M5)
11.	11-052020-001		Flat Washer (5.3 mm x12 mm x 1 mm)
12.	11-052933-001		Countersunk Screw (M5 x 12 mm)
13.	47-035219-003		Angle Bracket w/ Threaded Pin
14.	11-052018-001		Flat Washer (10.5 mm x 20 mm x 2 mm)
15.	11-051045-001		Hex Head Cap Screw (M10 x 30 mm)
16.	11-051745-001		Locknut (M10)
17.	11-054805-001		Button Hd. Socket Screw (M10 x 25 mm)
18.	11-051019-001		Hex Hd. Cap Screw (10 mm x 25 mm)
19.	47-035220-003		Accelerator Bracket w/Pin
20.	47-035224-003		Front Support - Left Hand
21.	47-035223-003		Front Support - Right Hand
22.	47-035228-003		Cross Support Brace

Accelerator Box Assembly (Subway)

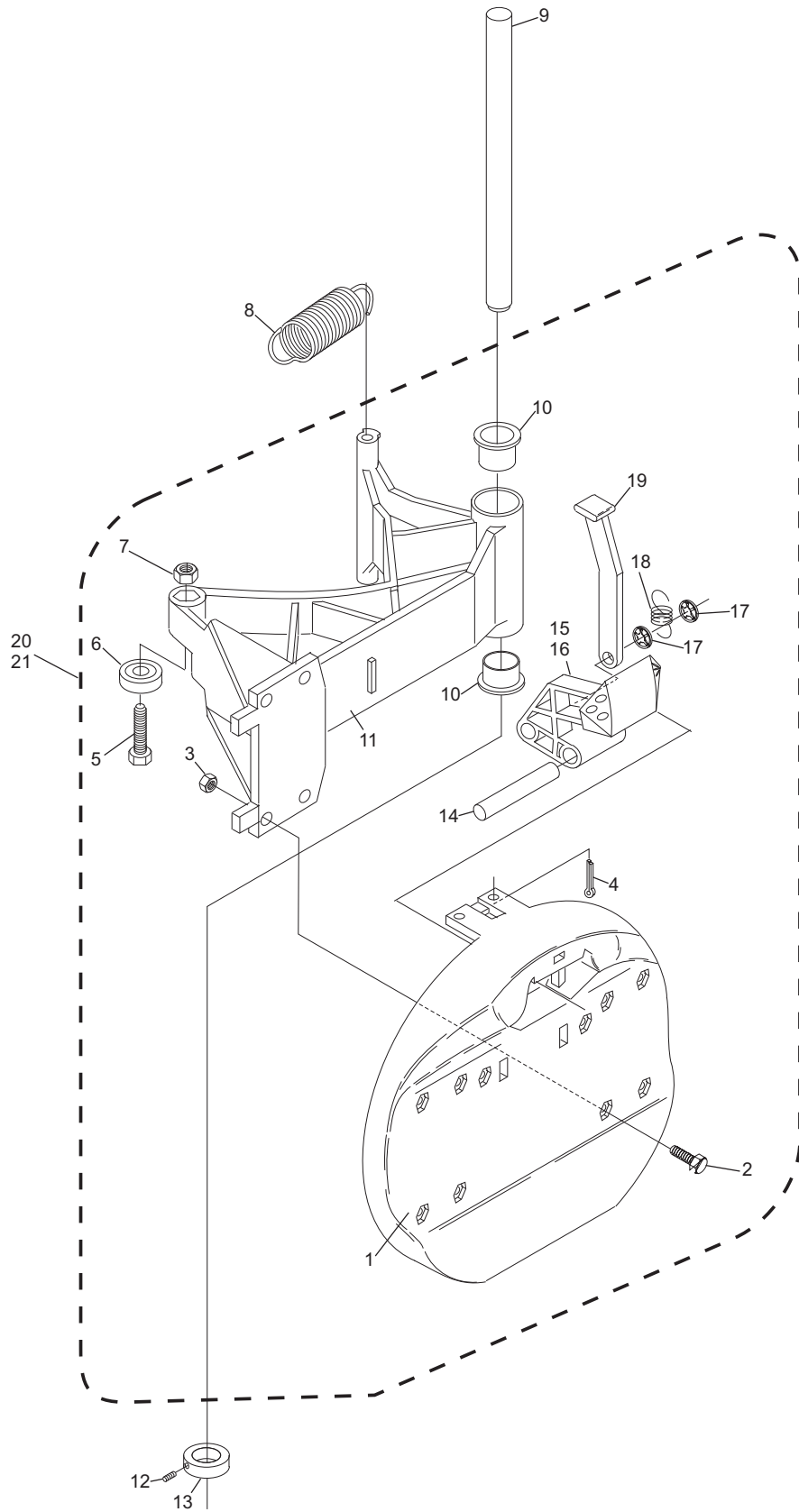


Accelerator Box Assembly (Subway)

Index No.	Part No.	Package / Order Reference	Description
1.	*47-031054-002		Ball Door
2.	11-051018-001		Hex Hd. Cap Screw (6 mm x 20 mm)
3.	11-051743-001		Locknut (M6)
4.	11-051793-001		Cotter Pin (2 mm x 16 mm)
5.	11-051067-001		Hex Hd. Cap Screw (M8 x 35 mm)
6.	11-430046-000		Bearing
7.	11-051744-001		Locknut (M8)
8.	47-030276-004		Tension Spring
9.	47-035238-004		Ball Door Arm Shaft
10.	47-034842-004		Bushing
11.	*47-031058-001		Ball Door Arm
12.	11-053101-000		Socket Set Screw (M6 x 8 mm)
13.	11-053622-001		Stop Ring (Collar)
14.	47-031091-004		Shaft
15.	47-031056-003		Ball Door Key - Left (Not Shown)
16.	47-031055-003		Ball Door Key - Right (Shown)
17.	11-053477-001		Speed Nut (7 mm)
18.	47-034767-004		Tension Spring
19.	47-031822-004		Lever
20.	47-033556-009		R.H. Ball Door Complete (Shown)
21.	47-033555-009		L.H. Ball Door Complete (Not Shown)

* Index Nos. 1 and 11 are universal for use in both left-hand and right-hand ball door assemblies.

Ball Door/Lock Assembly (Subway)

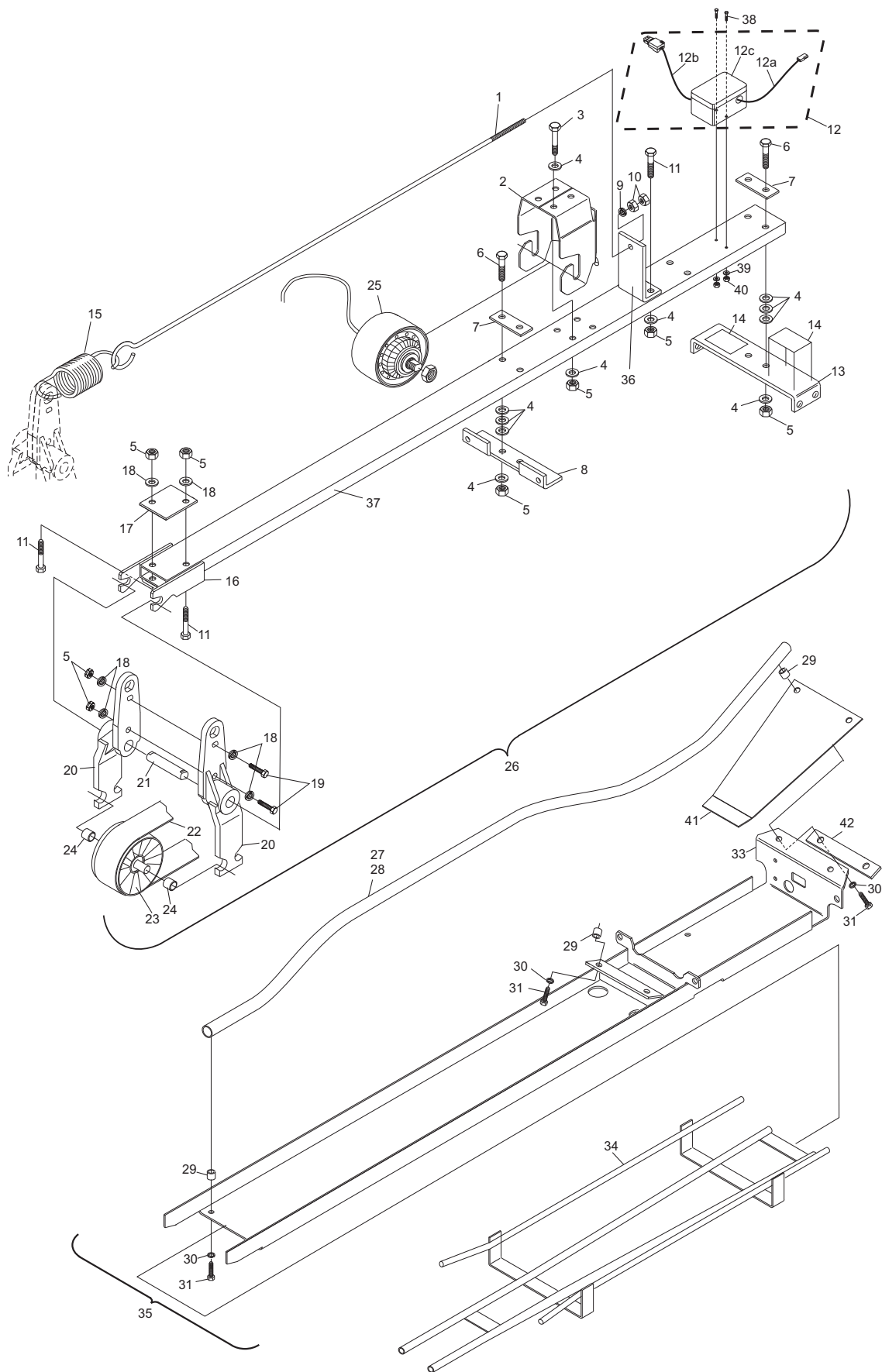


Ball Door/Lock Assembly (Subway)

Index No.	Part No.	Package / Order Reference	Description
1.	47-035236-003		Tension Rod
2.	47-035226-002		Motor Support Bracket
3.	11-051071-001		Hex Head Cap Screw (M10 x 60 mm)
4.	11-052050-001		Flat Washer (10.5 mm x 30 mm x 2.5 mm)
5.	11-051745-001		Locknut (M10)
6.	11-051093-001		Hex Head Cap Screw (M10 x 75 mm)
7.	47-035344-004		Stiffening Plate
8.	47-035229-002		Front Support
9.	11-052019-001		Flat Washer (8.4 mm x 24 mm x 2 mm)
10.	11-051704-001		Nut (M8)
11.	11-051087-001		Hex Head Cap Screw (M10 x 65 mm)
12.	47-036312-004		Terminal Box w/Cables
	12a. 47-245429-004		Overload Switch Cable
	12b. 47-246311-004		Motor Power Cable
	12c. 47-035253-003		Terminal Box w/Lid
13.	47-035228-003		Cross Support Brace
14.	53-400067-000		Safety Decal
15.	47-031248-004		Tension Spring
16.	47-035231-002		Support (Front Drum)
17.	47-035345-003		Stiffening Plate
18.	11-052018-001		Flat Washer (10.5 mm x 20 mm x 2 mm)
19.	11-051021-001		Hex Head Screw (M10 x 35 mm)
20.	47-031454-002		Pivot Lever
21.	47-035230-004		Axle Shaft
22.	10-635127-000		Flat Belt
23.	47-035232-002		Front Driving Drum Complete
24.	47-035234-004		Spacer
25.	99-030363-004	Not Available	Accelerator Motor/Rear Drive Drum Assembly w/Cable (208/230/380 VAC)
	47-277187-230		Motor Conversion Kit - 208V/230V Accelerators
	47-277188-400		Motor Conversion Kit - 380V Accelerators
26.	55-108224-009	S.O.	Drive Assembly Stringpin Ball Accelerator
27.	47-034730-004	47-862787-000	Protective Cover - Pkg. of 4
28.	47-035303-009	S.O.	Ball Rod w/Cover
29.	47-035214-004		Spacer
30.	11-051771-001		Lockwasher (10.2 mm x 18.1 mm x 2.2 mm)
31.	11-051045-001		Hex Head Cap Screw (M10 x 30 mm)
32.	11-051078-001		Hex Head Cap Screw (M10 x 40 mm)
33.	47-035211-001		Bottom Accelerator Plate
34.	53-520634-001		Metric Transition Track
35.	47-035304-001		Ball Guide Assembly
36.	47-035235-003		Support (Tension Rod)
37.	47-035227-003		Support (Drive Assy)
38.	11-051558-001		Socket Hd. Cap Screw (M5 x 55 mm)
39.	11-052005-001		Flat Washer (5.3 mm x 10 mm x 1 mm)
40.	11-051742-001		Locknut (M5)
41.	47-035351-003		Protection Plate
42.	47-035311-004		Stiffening Plate - Ball Rod

S.O. = Special Order

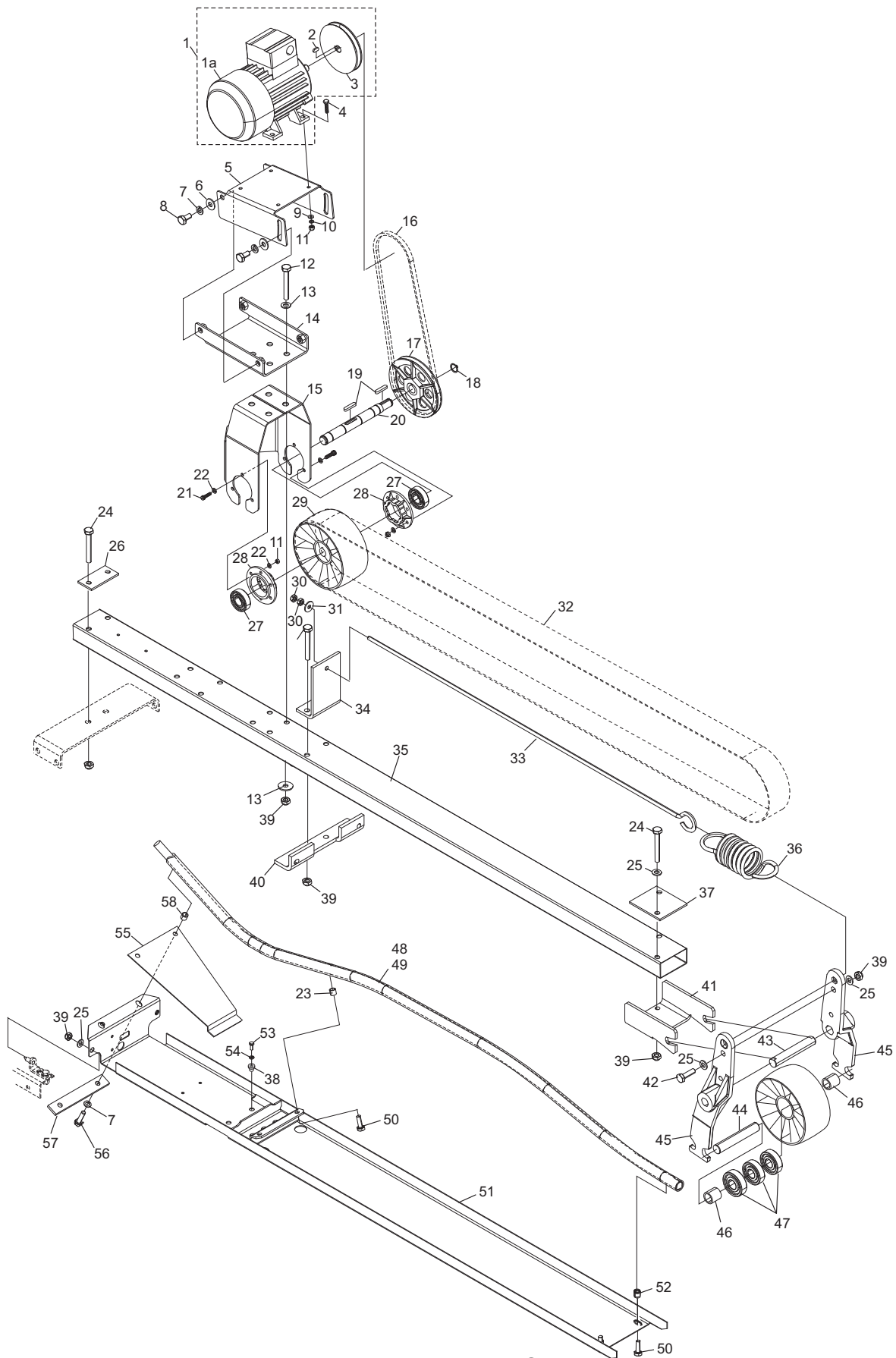
Ball Accelerator (Subway)



Ball Accelerator (Subway)

Index No.	Part No.	Package / Order Reference	Description
1.	47-076891-400		Accelerator Motor (380V/400V) w/Cable, Pulley
	1a. 99-076886-000		Accelerator Motor (380V/400V) - Motor Only
1.	47-076891-230		Accelerator Motor (208V/230V) w/Cable, Pulley
	1a. 99-076885-000		Accelerator Motor (208V/230V) - Motor
2.	11-053101-001		Key
3.	47-036703-001		Pulley
4.	11-051028-001		HHCS
5.	47-037451-000		Tension Adjustment Plate
6.	11-052028-001		Flat Washer
7.	11-051771-001		Lockwasher
8.	11-051005-001		HHCS
9.	11-052048-001		Fat Washer
10.	11-051069-001		Lockwasher
11.	11-051743-001		Locknut
12.	11-051087-001		HHCS
13.	11-052050-001		Flat Washer
14.	47-037452-000		Plate
15.	47-036697-001		Bracket
16.	11-053912-000		Belt
17.	47-013956-003		Pulley
18.	11-051852-000		External Tooth Retaining Ring
19.	11-053501-001		Key
20.	47-036700-001		Drive Shaft
21.	11-051515-001		Socket Head Screw
22.	11-052007-001		Flat Washer
23.	47-035214-000		Spacer
24.	11-051093-001		HHCS
25.	11-052018-001		Flat Washer
26.	47-035344-004		Plate
27.	11-430015-000		Bearing
28.	47-014952-003		Collar
29.	47-036701-001		Wheel
30.	11-051704-001		Hex Nut
31.	11-052019-001		Flat Washer
32.	10-635127-000		Flat Belt
33.	47-036705-000		Tension Rod
34.	47-035235-000		Bracket
35.	47-035227-000		Bar
36.	47-031248-004		Spring
37.	47-035345-003		Plate
38.	47-035371-004		Spacer for Ball Accelerator
39.	11-051745-001		Hex Nut
40.	47-035229-000		Shaft Holder
42.	11-051021-001		HHCS
43.	47-035230-004		Shaft
44.	47-035234-004		Wheel Holder
46.	47-035234-004		Spacer
47.	11-430016-000		Bearing
48.	47-035303-000		Guide Tube
49.	47-034730-000		Plastic Tube (cover)
50.	11-051045-001		HHCS
51.	47-035211-000		Tray
52.	47-035212-001		Spacer
53.	11-051035-001		HHCS
54.	11-053602-001		Lockwasher
55.	47-035531-003		Protection Plate
56.	11-051078-000		HHCS
57.	47-035311-004		Flat Bar

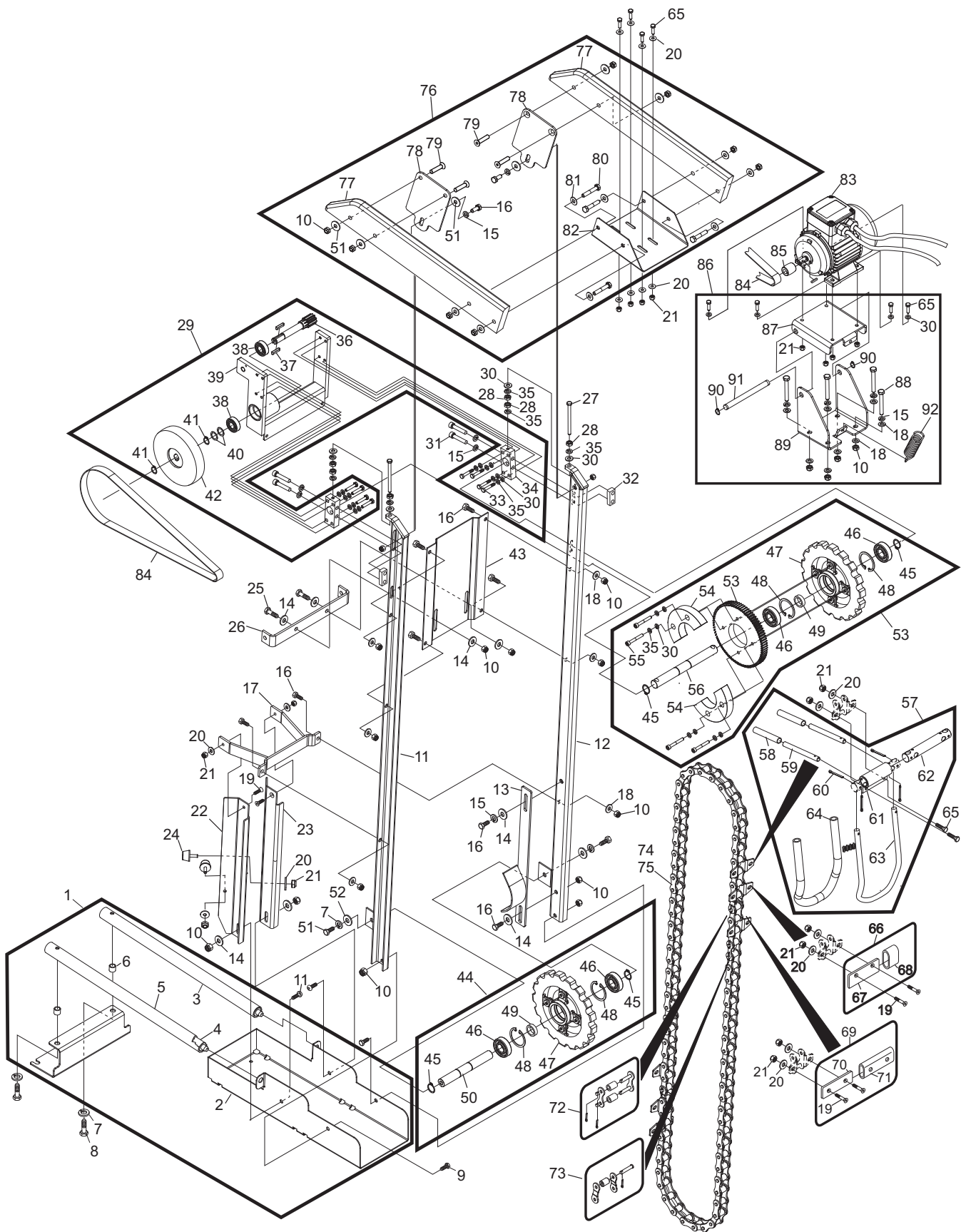
Ball Accelerator (SUBWAY)



Ball Accelerator (Subway)

Index No.	Part No.	Package / Order Reference	Description
1	55-109300-009		Assembly - Surface Return Diverter
2	55-109284-000		Diverter
3	55-109278-009		Assembly - Ball Rod Diverter (Covered)
4	55-109278-000		Ball Rod Diverter (Uncovered)
5	47-034730-004		Plastic Tube Cover
6	47-035214-004		Distance Ring
7	11-051771-000		Lock Washer (M10)
8	11-051045-001		Hex Head Cap Screw (M10 x 30 mm)
9	11-051038-001		Hex Head Cap Screw (M8 x 16 mm)
10	11-051744-001		Locknut (M8)
11	55-108888-000		Side Frame Left Hand
12	55-108887-000		Side Frame Right Hand
13	55-108633-000		Paddle Turn Cam
14	11-052006-001		Flat Washer - Thick
15	11-051770-001		Lock Washer (M8)
16	11-051010-001		Hex Head Cap Screw (M8 x 20 mm)
17	55-108629-000		Main Holder
18	11-052003-001		Flat Washer (M8)
19	11-052945-001		Socket Flat Head Screw
20	11-052037-001		Flat Washer (M10)
21	11-051743-001		Locknut (M6)
22	55-108631-000		Holder Left Hand
23	55-108630-000		Holder Right Hand
24	55-108632-000		Rubber Bumper
25	11-051015-001		Hex Head Cap Screw (M8 x 25 mm)
26	47-037757-000		Mounting Bracket
27	11-051024-001		Hex Head Cap Screw (M6 x 70 mm)
28	11-051702-001		Hex Nut (M10)
29	55-108890-009		Assembly - Upper Drive Support
30	11-052008-001		Flat Washer (M6)
31	11-051525-001		Socket Head Cap Screw (M8 x 30 mm)
32	55-108483-000		Nut Plate
33	11-051022-000		Hex Head Cap Screw (M6 x 30 mm)
34	55-108599-000		Adjustment Block
35	11-051769-001		Lock Washer (M6)
36	55-108601-000		Pinion Shaft
37	11-053501-000		Key
38	11-430006-000		Bearing
39	55-108891-000		Drive Mounting Block
40	11-054112-000		Shim Washer
41	11-051858-000		External Retaining Ring
42	55-108364-000		Flat Belt Pulley
43	55-108889-000		Support Pan
44	55-108597-000		Assembly - Lower Drive Support
45	11-051853-000		External Tooth Retaining Ring
46	11-430050-000		Bearing
47	55-108471-000		Sprocket
48	11-051901-000		Retaining Ring
49	55-108540-000		Distance Ring
50	55-108397-000		Lower Drive Shaft
51	11-051019-001		Hex Head Cap Screw (M10 x 25 mm)
52	11-052018-001		Flat Washer (M10)
53	55-108498-000		Large Gear
54	55-108499-000		Bumper Ring
55	11-051574-001		Socket Head Cap Screw (M6 x 45 mm)
56	55-108374-000		Drive Shaft
57	55-108608-000		Assembly Ball Paddle
58	55-108613-000		Plastic Tubing
59	55-108611-000		Roll Pin
60	11-051792-000		Split Pin
61	55-108612-000		Bracket
62	55-108609-000		Hinge Shaft
63	55-108610-000		Ball Paddle
64	55-108614-000		Protector Sleeve
65	11-051018-000		Hex Head Cap Screw
66	55-108625-009		Paddle Buffer
67	55-108626-000		Paddle Plate
68	55-108627-000		Paddle Bumper
69	55-108606-009		Assembly - Ball Paddle Stop
70	55-108606-000		Paddle Stop
71	55-108607-000		Protector Sleeve
72	55-108620-000		Chain Connecting Link
73	55-108892-CO3		Chain Offset Link
74	55-108892-000		Chain Complete
75	55-108892-009		Chain Complete w/Ball Paddles
76	47-037711-000		Upper Transition Track
77	47-037763-000		Surface Guide Rail
78	47-037763-000		Elevator transition Mount
79	11-052952-000		Socket Flat Head Cap Screw
80	11-051085-001		Hex Head Cap Screw (M8 x 45 mm)
81	47-052013-001		Flat Washer
82	47-037711-000		Upper Transition Plate
83	55-108388-208		Motor with Cables and Pulley, 208VAC
	55-108388-220		Motor with Cables and Pulley, 220VAC
	55-108388-380		Motor with Cables and Pulley, 380VAC
84	55-108392-000		Flat Belt
85	55-108541-000		Motor Pulley, 50Hz
	55-108317-000		Motor Pulley, 60Hz
86	55-109343-000		Motor Mount Assembly
87	55-109341-000		Upper Holder Plate Motor Mount
88	11-051054-001		Hex Head Cap Screw (M8 x 60 mm)
89	55-109340-000		Lower Holder Plate Motor Mount
90	11-051851-000		External Tooth Retaining Ring
91	55-109342-000		Motor Mount Shaft
92	47-095923-004		Spring

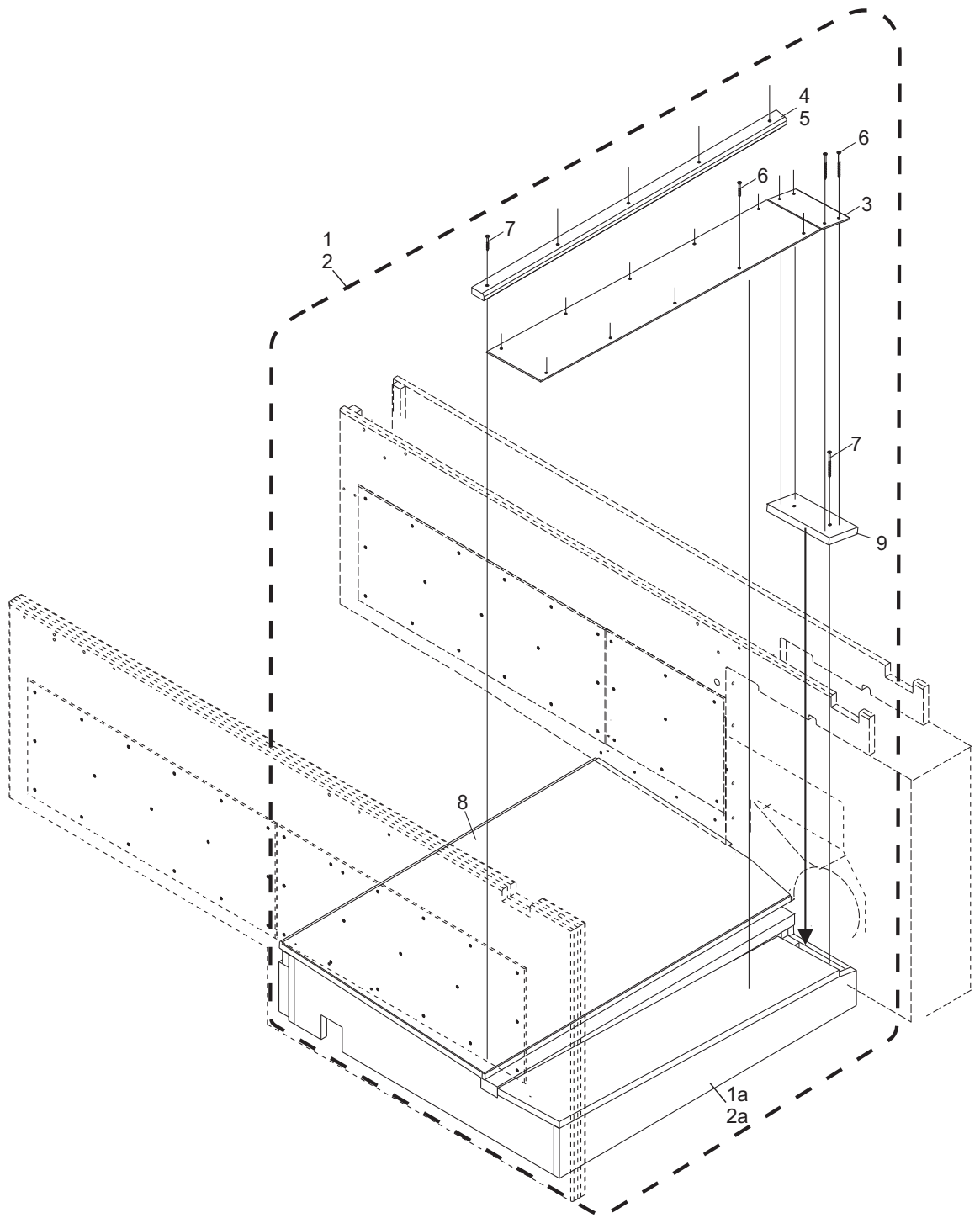
Ball Elevator (SURFACE)



Ball Elevator (SURFACE)

Index No.	Part No.	Package / Order Reference	Description
1.	55-273200-009		Pit Assembly Complete - Right Lane (Shown)
	1a. 55-273200-000		Pit Frame Assembly - Right Lane (Shown)
2.	55-273201-009		Pit Assembly Complete - Left Lane (Not Shown)
	2a. 55-273201-000		Pit Frame Assembly - Left Lane (Not Shown)
3.	55-273200-004		Bended Plate
4.	55-273200-003		Strip - Right Lane (Shown)
5.	55-273201-003		Strip - Left Lane (Not Shown)
6.	11-051892-001		T-20 Torx Self Tap Counter Sink (M4.5 x 25)
7.	11-051893-001		T-25 Torx Self Tap Counter Sink (M5 x 60)
8.	55-273200-001		Protector Plate (Carpet)
9.	55-273200-005		Top Plate

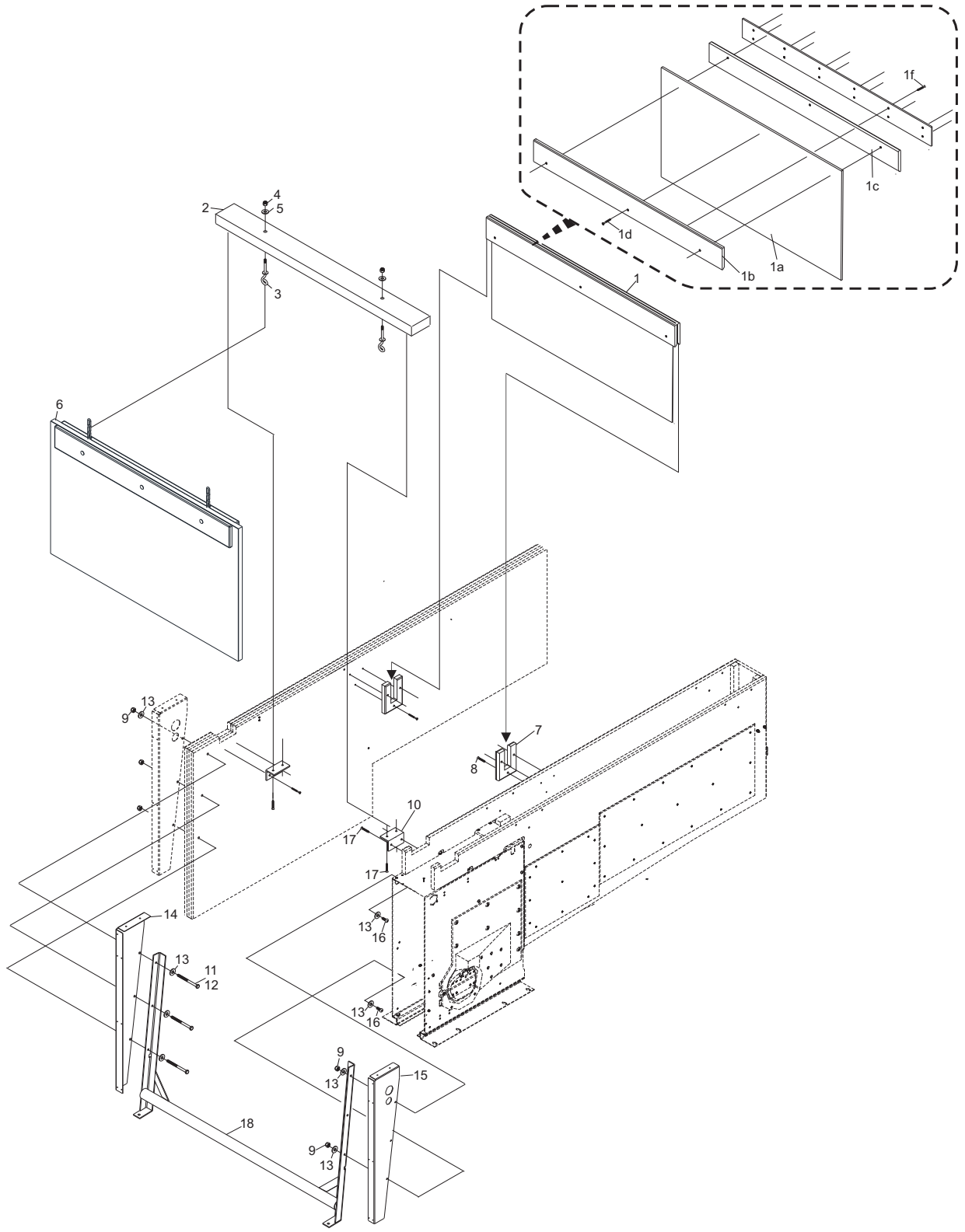
Pit Assembly



Pit Assembly

Index No.	Part No.	Package / Order Reference	Description
1.	55-278280--009		Pit Curtain Assembly
	1a. 55-278280-000		Carpet
	1b. 55-278156-001		Carpet Holder 1
	1c. 55-278156-002		Carpet Holder 2
	1d. 11-051896-001		T-25 Torx Self Tap Counter Sink (M5 x 40)
	1e. 55-278227-002		Protector Plate
	1f. 11-051894-001		T-25 Torx Self Tap Counter Sink (M5 x 35)
2.	55-278182-000		Ball Cushion Support
3.	55-278029-000		Swing Hook
4.	11-051745-001		Locknut (M10)
5.	11-052068-001		Flat Washer (10 mm x 40 mm x 3 mm)
6.	55-278153-009		Ball Cushion Assembly (Black)
7.	55-278171-000		Support - Carpet Mat
8.	11-051893-001		T-25 Torx Self Tap Counter Sink (M5 x 60)
9.	11-051744-001		Locknut (M8)
10.	55-273012-001		Ball Cushion Support
11.	11-051107-001		Hex Head Cap Screw (M8 x 110 mm) - For Inside (Common) Division Kickbacks
12.	11-051081-001		Hex Head Cap Screw (M8 x 100 mm) - For End Lane Division Kickbacks
13.	11-052019-001		Flat Washer (8.4 mm x 24 mm x 2 mm)
14.	55-278056-001		Right Hand Rear Bracket
15.	55-278057-001		Left Hand Rear Bracket
16.	11-051044-001		Hex Head Cap Screw (M8 x 30 mm)
17.	11-051892-001		Torx Self Tap Counter Sink (M4.5 x 25)
18.	55-278012-000		Ball Cushion Frame

Ball Cushion / Pit Curtain



Ball Cushion / Pit Curtain