

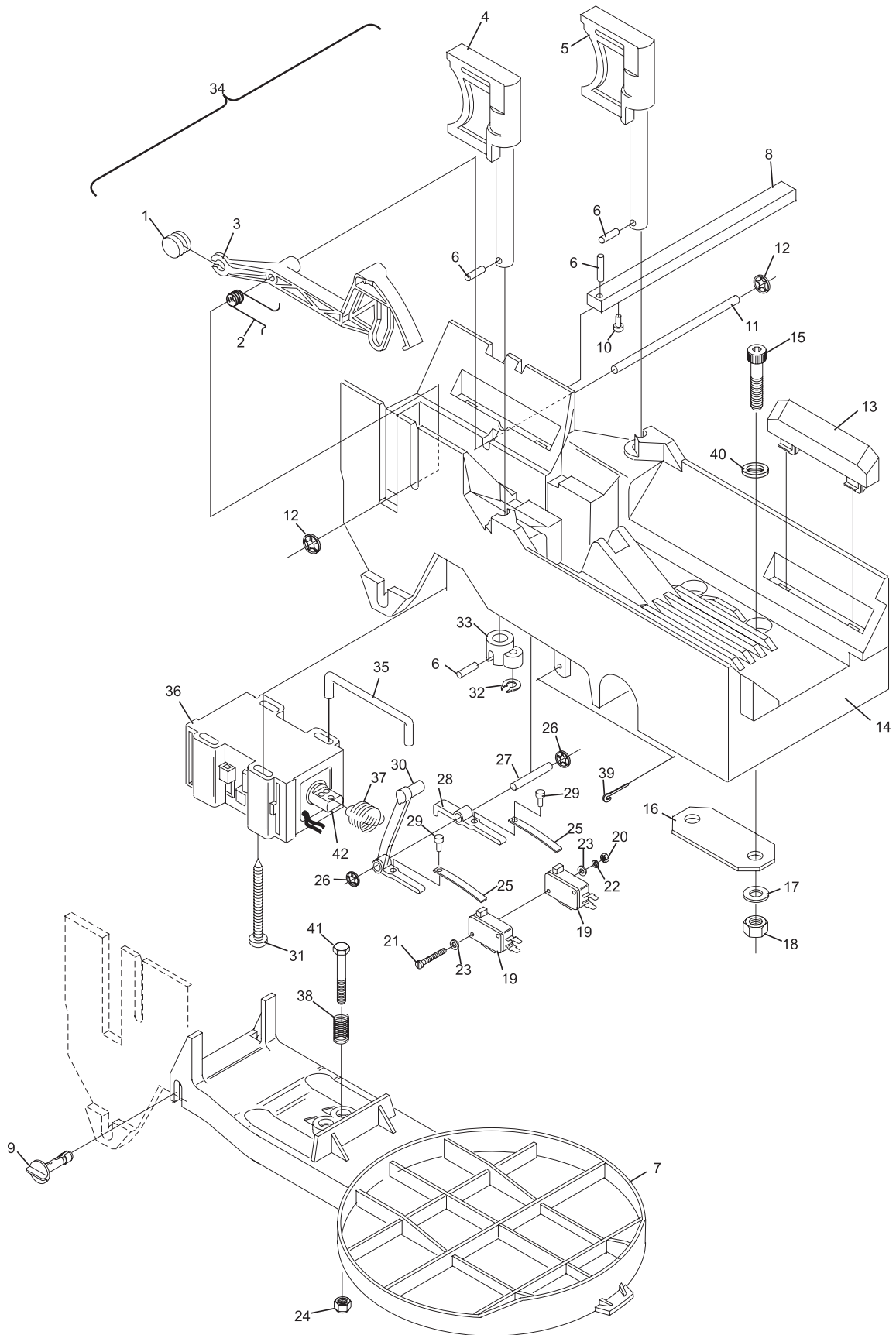
Index			
No.	Part No.		Description
1.	47-052124-004		Counter Weight
2.	47-050640-004		Tension Spring
3.	47-050665-003		Switch Finger
4.	47-052440-004		R.H. Pin Gripper
5.	47-052439-004		L.H. Pin Gripper
6.	11-052681-001		Roll Pin (3 mm x 16 mm)
7.	47-054298-001		Pin Detector Plate w/Pin
8.	*47-050675-004		Ground Shaft
9.	47-860005-000		Pivot Pin (Pkg. of 10)
10.	11-053776-001		C.R. Pan Hd. Screw (4 mm x 8 mm) - red box only
11.	47-050668-004		Switch Finger Shaft
12.	11-053476-001		Speed Nut (4 mm)
13.	47-050308-004		Damper
14.	47-054689-009		Pin Holder w/Dampers
	N.A.		Pin Holder w/o Dampers
15.	11-051535-001		Socket Hd. Cap Screw (8 mm x 40 mm)
16.	47-050676-004		Bracket
17.	11-051770-001		Lockwasher (8 mm)
18.	11-051704-001		Hex Nut (8 mm)
19.	47-053635-004		Micro Switch (single, cherry)
	47-054700-004		Micro Switch (double)
20.	11-051708-001		Hex Nut (2.5 mm)
21.	11-052220-001		Sltd. Machine Screw (2.5 mm x 30 mm)
22.	11-051766-001		Lockwasher (2.5 mm)
23.	11-052041-001		Flat Washer (2.7 mm)
24.	11-051743-001		Lock Nut (6 mm)
25.	47-050639-004		Switch Spring
26.	11-053475-001		Speed Nut (3 mm)
27.	47-054701-004		Shaft
28.	47-054703-004		Switch Finger
29.	11-055150-000		Slotted Machine Self Tap Screw Plastic (2.5 mm x 5 mm)
30.	47-054702-004		Switch Finger
31.	11-054776-001	N.A.	C.R. Pan Hd. Screw (5 mm x 60 mm)
	47-861037-001	R.O.	C.R. Pan Hd. Screw (5 mm x 60 mm) Pkg. of 10
32.	11-054500-000	N.A.	Grip Ring (4 mm)
	47-861036-000	R.O.	Grip Ring (4 mm) Pkg. of 10
33.	46-050300-004		Catch
34.	47-054699-009		Pin Holder Complete
35.	47-050266-004		Connector Link
36.	99-060242-004		Soleniod
37.	46-050302-004		Tension Spring
38.	47-054708-004		Pin Deflector Spring
39.	11-051808-001		Cotter Pin (1.6 mm x 40 mm)
40.	47-054691-000	N.A.	Flat Washer (8.4 mm)
	11-052003-001	R.O.	Flat Washer (8.4 mm)
41.	11-051088-001		Hex Hd. Cap Screw (6 mm x 35 mm)
42.	99-060208-004		Plunger

N.A. = No Longer Available

R.O. = Replacement Option

\* Ground Shaft is reversed for left-hand or right-hand Pin Holder Assembly.

## GS-96 - GS-98 Pin Holder Assembly



**GS-96 - GS-98 Pin Holder Assembly**